

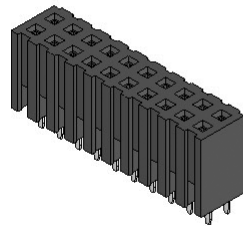
## Female Header 2.0 mm

180° Series

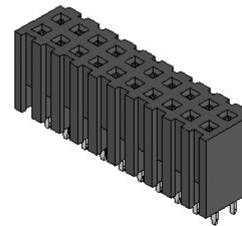
### SPECIFICATIONS

Current Rating: 2 A  
 Insulator Resistance: 3000 MOhm min.  
 Contact Resistance: 20 mOhm max.  
 Dielectric Withstanding: AC 500 V  
 Operating Temperature: -40°C ~ +105°C  
 Soldering Temperature: 260°C for 3~5sec. max  
 Contact Material: Phosphor Bronze  
 Insulator Material: Polyester, UL 94V-0  
 Standard: PA-46  
 Finish: Tin, Gold or Duplex Plated  
 Standard: Gold Flash all over  
 Note: Duplex Plating: Gold Plated on contact area, Tin on solder area

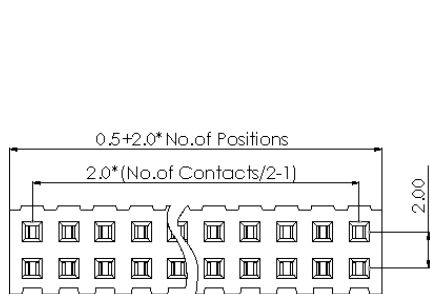
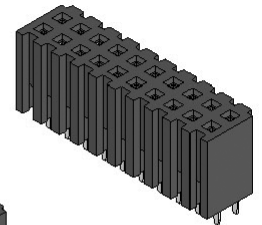
F405-SGA-D022-XX



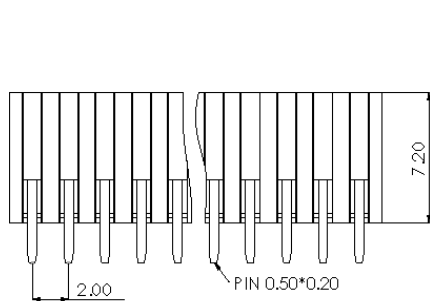
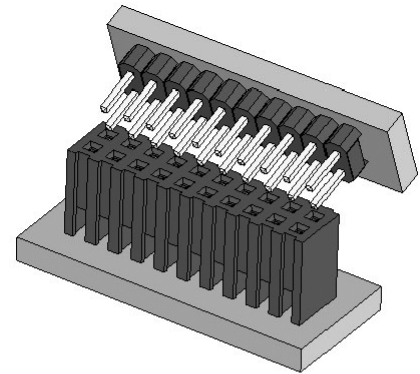
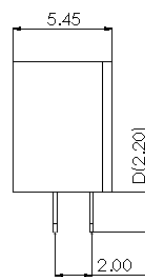
F406-SGA-D022-XX



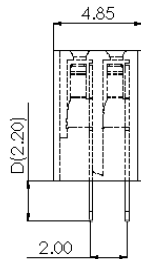
F407-SGA-D022-XX



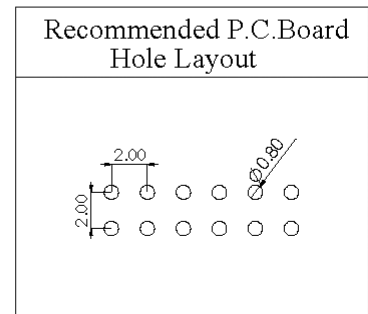
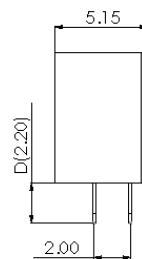
[F407]



[F405]



[F406]



### How to order

Unit: mm

Series	Connector Type	Contact Plating	Material	Pin Length mm	Number of Contacts
<b>FXXX</b>	<b>- X</b>	<b>X</b>	<b>X -</b>	<b>DXXX</b>	<b>- XX</b>
F405:F/H 2.00 H:7.20 Dual Row F406:F/H 2.00 H:7.20 Dual Row F407:F/H 2.00 H:7.20 Dual Row	S: Straight Type	G: Gold Flash T: Tin Plated A: 10U" Gold B: 15U" Gold C: 20U" Gold © Duplex Plating D: Gold Flash/Tin (Standard: G)	A: PA-46 N: Nylon-6T (Standard: A)	S-D D022	(04 TO 80 Contacts)